

# Indexable Cant Sizer/Planer Head

Outer diameter: 6" to 14"

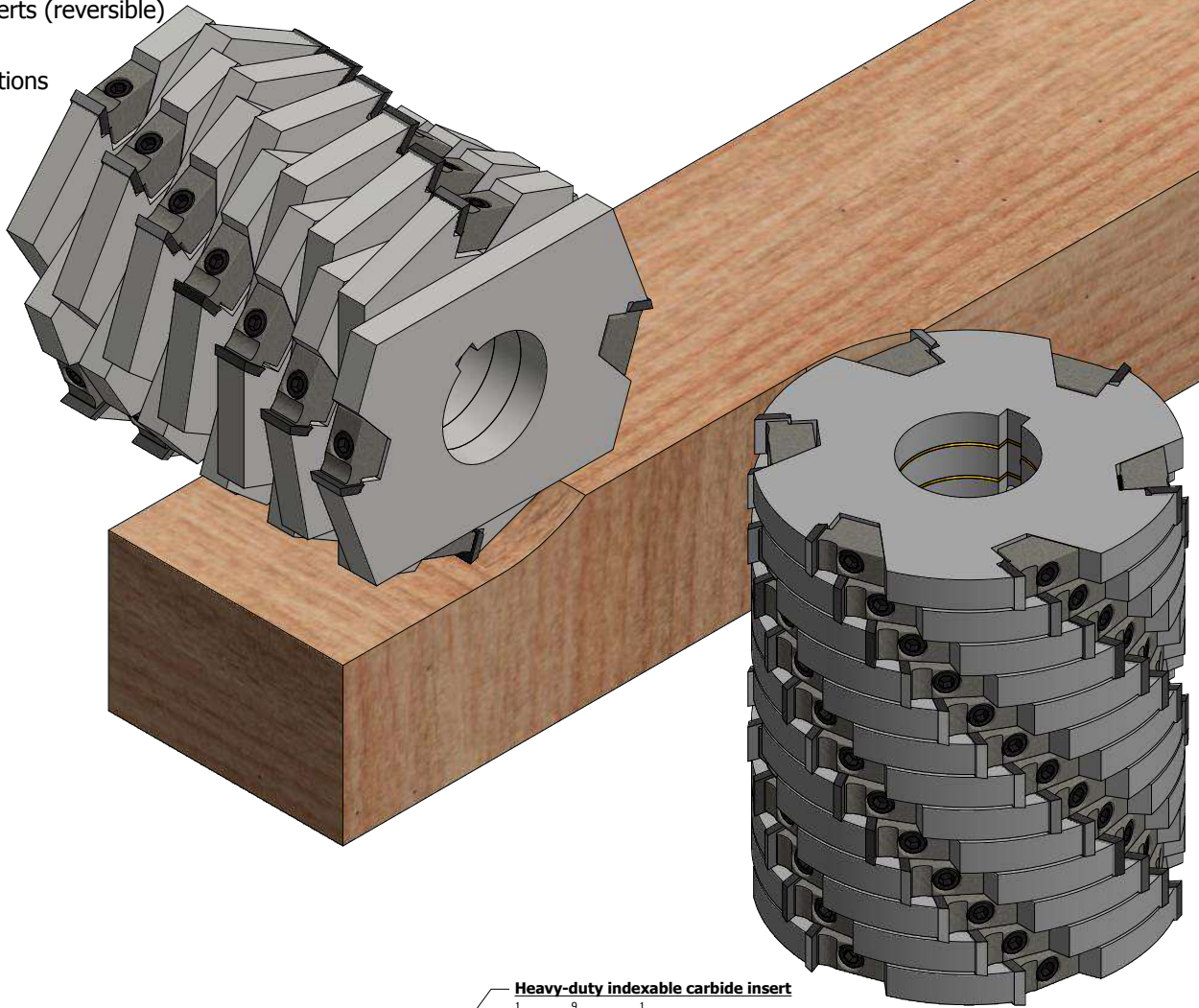
Width:  $\frac{1}{2}$ ",  $\frac{3}{4}$ ", or 1" increments

Inner diameter:  $\frac{5}{8}$ " to 3"

Indexable carbide inserts (reversible)

Keyed:  $\frac{3}{8}$ ",  $\frac{1}{2}$ "

2 - 24 wing configurations



**Wedge block**  
PT 515

**Heavy-duty indexable carbide insert**

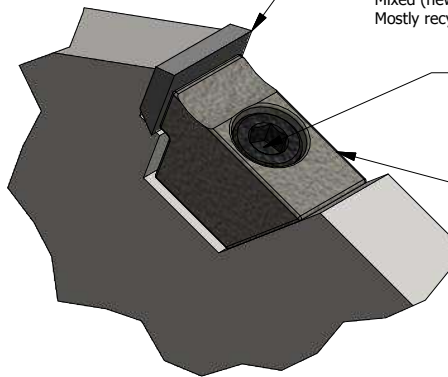
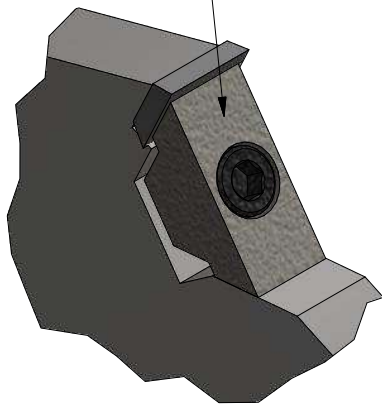
$\frac{1}{2}$ " tall x  $\frac{9}{16}$ " wide x  $\frac{1}{8}$ " thick x 2-sided

New lumber (green or KD) - PT 501  
Frozen or knotty lumber - PT 501-L (blue)  
Mixed (new wood + recycled) - PT 501-N (yellow)  
Mostly recycled wood - PT 501-NX

**Socket head cap screw**

PT 511 :  $\frac{1}{4}$ "-20 x  $\frac{3}{4}$ "  
PT 511-L :  $\frac{1}{4}$ "-20 x 1" (optional)

**Wedge block**  
PT 510



## PROFILE TECHNOLOGY INC.

Custom Engineered Tooling and Machinery

300 Seebold Spur  
Fenton, MO 63026  
www.profiletech.com

(800) 369-4242 toll free  
(314) 965-9111 main  
(314) 966-5550 fax  
info@profiletech.com

